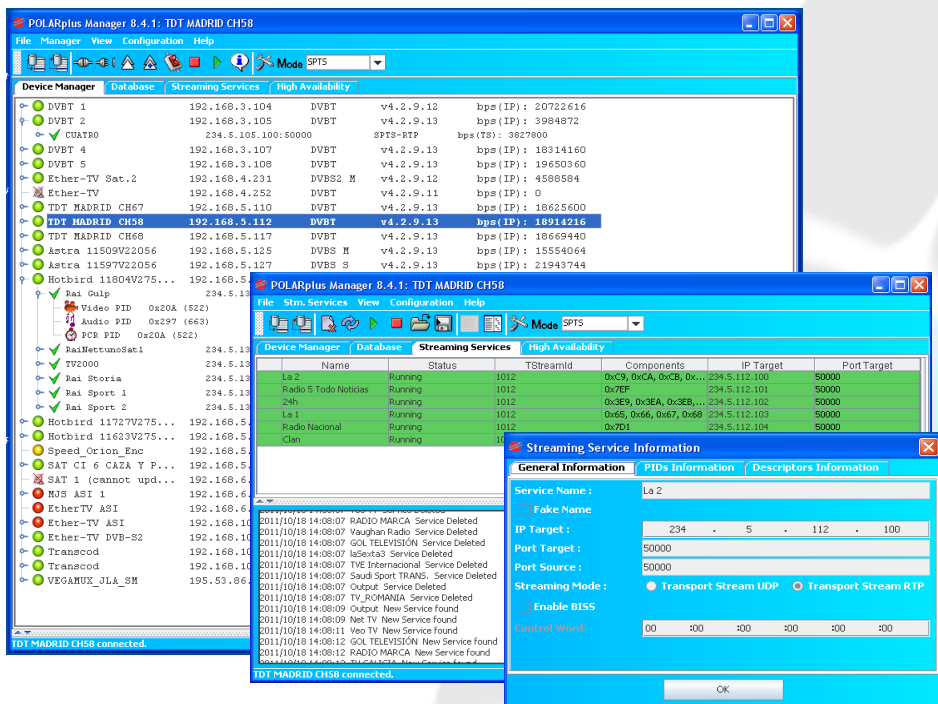
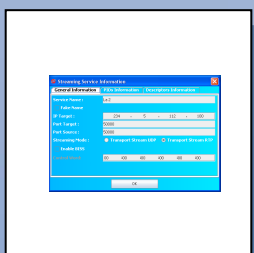
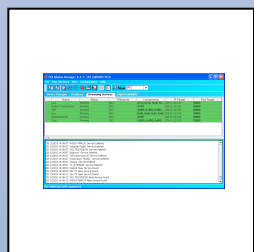
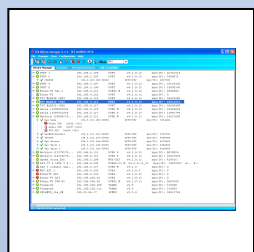


POLARplus Manager is the management platform that allows configuration and control of all POLARplus devices (EtherTV family, VegaMux Multiplexer, Ursus Transcoder, ...). POLARplus Manager has a user-friendly graphical user interface that limits the learning curve, reducing drastically the training costs. This management tool is based on Java technology so it can be installed in Linux and Windows operating systems and it is provided to POLARplus devices customers free of charge.



KEY FEATURES

- Common friendly graphical interface for all POLARplus devices (EtherTV family, VegaMux Multiplexer, Ursus Transcoder, ...)
- Automatic detection and display of all POLARplus devices existing in the network
- Displaying status and configuration of any POLARplus device.
- Saving and restoring of any POLARplus device configuration, making easier frequent configuration changes
- PSI/SI tables parsing and analysis
- Automatic service database generation during DVB network scanning.
- Events logging
- Easy installation in Windows and Linux platforms
- Graphical user interface customization (under a commercial agreement)

SPECIFICATIONS AND REQUIREMENTS

- o **Network Protocols**
 - ✓ TCP, UDP
 - ✓ SAP, SDP for automatic device discovering
 - ✓ RPC for device control and configuration
 - ✓ IGMP v1, v2
- o **Operating Systems**
 - ✓ Linux Ubuntu, Linux Debian
 - ✓ Windows XP, Windows Vista, Windows 7
- o **Supported devices**
 - ✓ EtherTV (DVB-T, DVB-C, DVB-S, DVB-S2, DVB-ASI)
 - ✓ EtherTV-CI (DVB-T, DVB-C, DVB-S, DVB-S2)
 - ✓ EtherTV-Bridge
 - ✓ EtherTV-Mux
 - ✓ VegaMux
 - ✓ VegaMux with scrambler and Simulcrypt interface
 - ✓ Ursus Transcoder